



## About bowling hand signals

Hand signals are used in lawn bowls to aid communications between team members, or when playing competition singles, between players and the marker. In team games, signals pass between the player occupying the mat and the skip/vice and should only occur when your team has possession of the mat. In singles, the marker can use signals to indicate bowl position, who has shot, out of bounds decisions and to respond to questions but, he/she does not signal tactics. The overall aim in using signals is to improve communication between players and to avoid interference that loud voices could cause.

## What is included

The included signal illustrations cannot cover all possible eventualities and therefore variations, combinations and possibly other signs may need to be employed. The signals that have been included are categorised under the following headings:

	Page		Page
1. Mat placement	2	Delivery result	5
2. Rolling the jack - distance	2	Bowl in or out	5
3. Calling the delivery	3	Who has shot or score	6
4. Identifying Bowls	4	Shot uncertain	6
5. Obscure jack - where is it	4		

## Rink dimensions

A diagrammatic representation (not to scale) of a bowling rink is included on page 7. This will help put some of the included signals into a spatial context.

## Deaf benefit

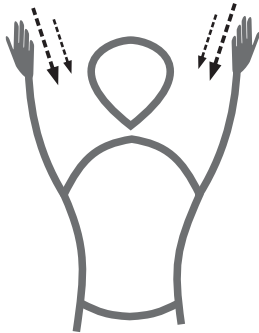
Signals are also very beneficial to deaf/hard-of-hearing bowlers. Furthermore, knowing a few basic Auslan signs can complement communication when used in conjunction with signals. Therefore, some examples of common Auslan signs that could be used when bowling are shown on pages 8 and 9.

### Edition 1 notes

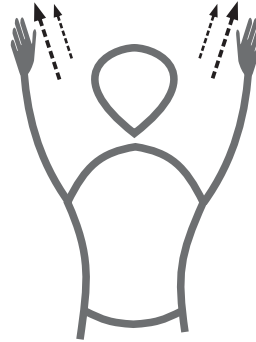
Edition 1 of "Let your hands do the talking" has been approved by the Committee as a guide to hand signals to be used by the Springwood Bowling Club. The document cannot possibly cover all eventualities and from time-to-time amendments and additions suggested by members will be incorporated in future editions.

If you have any suggestions as to how the document can be improved, then contact one of the Committee Members or, send your suggestions directly to the author, Joe Stewart, via email to this address: [joe.at2777@gmail.com](mailto:joe.at2777@gmail.com)

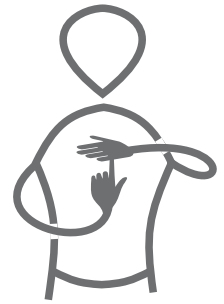
## 1. Mat placement



BRING MAT  
FORWARD  
Arms & hands  
towards you

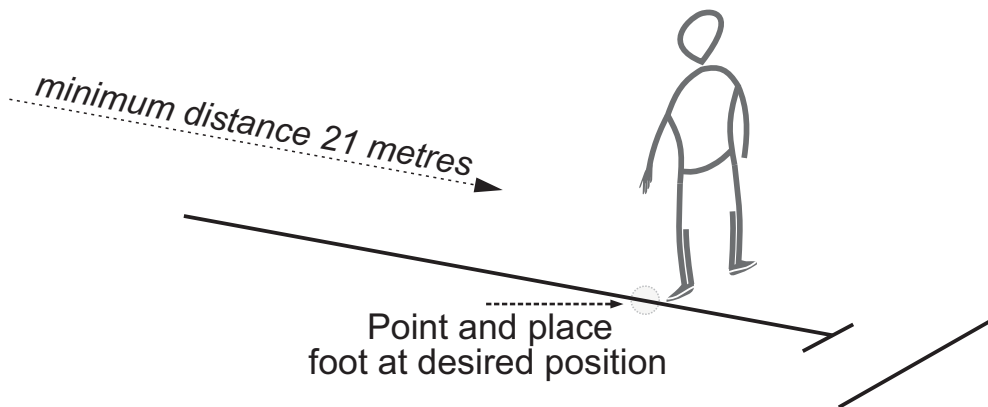


TAKE MAT  
BACK  
Arms & hands  
away from you



PLACE MAT  
ON TEE

## 2. Rolling the jack - distance

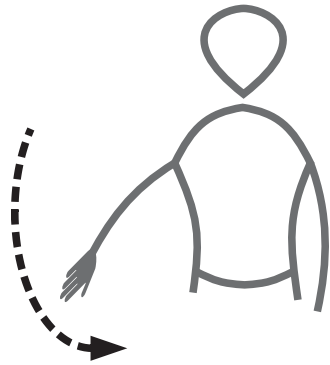


### Note:

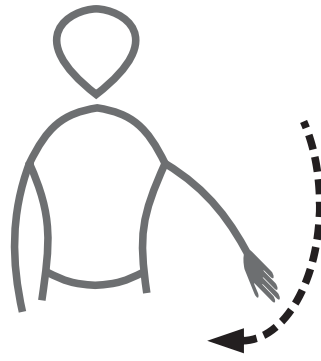
There is a required minimum distance for the jack roll; often referred to as the **Hog Line**. The Hog Line is an imaginary line 21 metres in front of the mat. If the jack roll does not achieve minimum distance the opposing lead bowler then re-rolls the jack, moving the mat if desired or, in social bowls, the skips can agree to place the jack at a chosen distance.

For out of bounds jack rolls, the same re-roll conditions apply, or again in social bowls, the skips can agree to place the jack at a chosen distance.

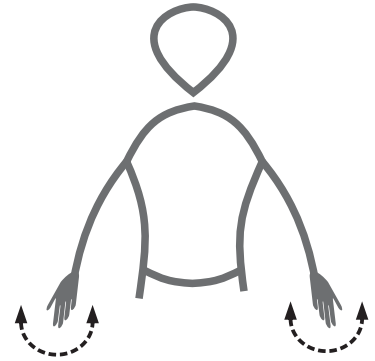
## Calling the delivery



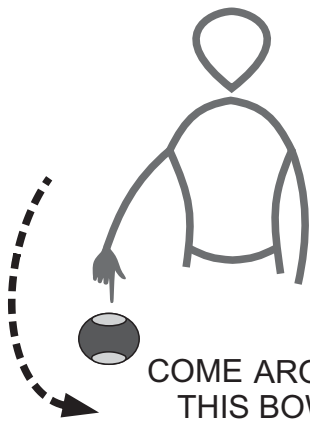
**DRAW FROM LEFT**



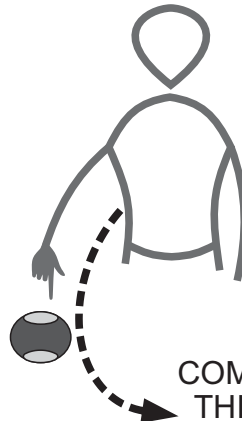
**DRAW FROM RIGHT**



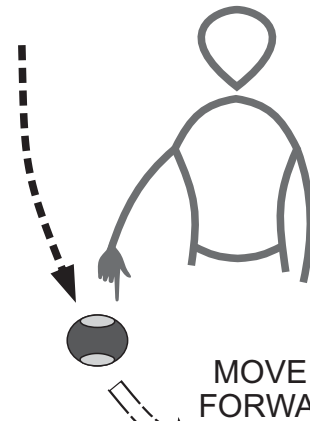
**DRAW EITHER WAY**



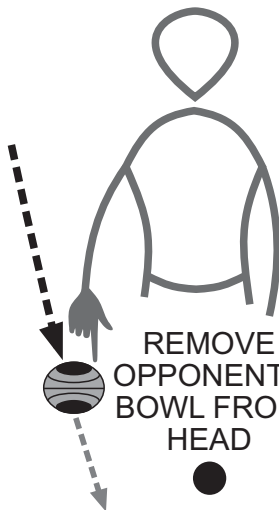
**COME AROUND THIS BOWL**  
 Point, then indicate draw



**COME INSIDE THIS BOWL**  
 Point, then indicate draw

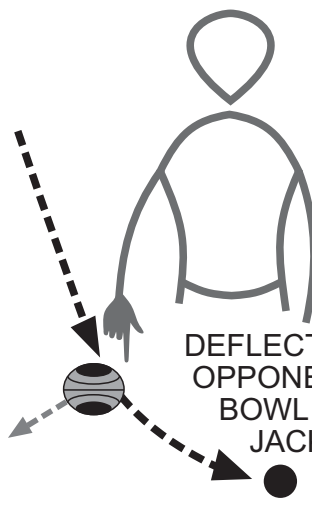


**MOVE OUR BOWL FORWARD TO JACK**  
 Point, then indicate draw



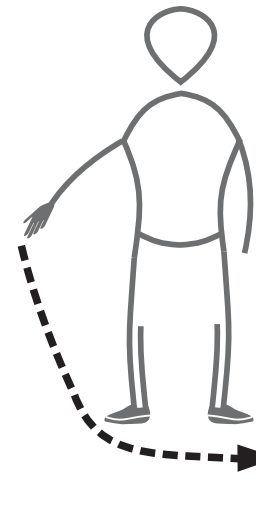
**REMOVE OPPONENTS BOWL FROM HEAD**

Point, then indicate draw



**DEFLECT OFF OPPONENTS BOWL TO JACK**

Point, then indicate draw

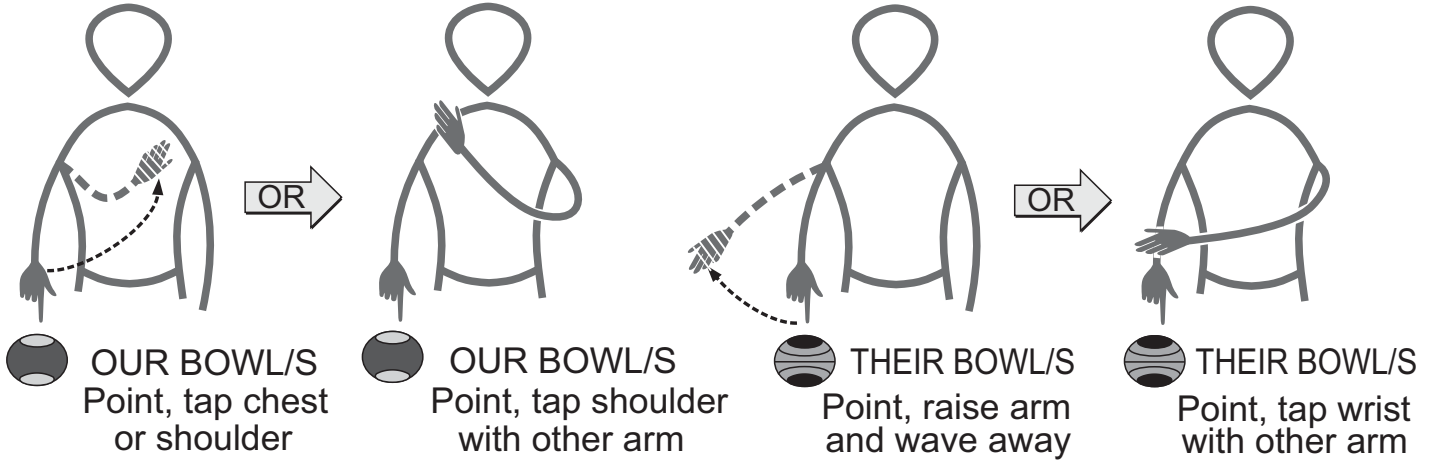


**DRAW TO OBSCURED JACK**

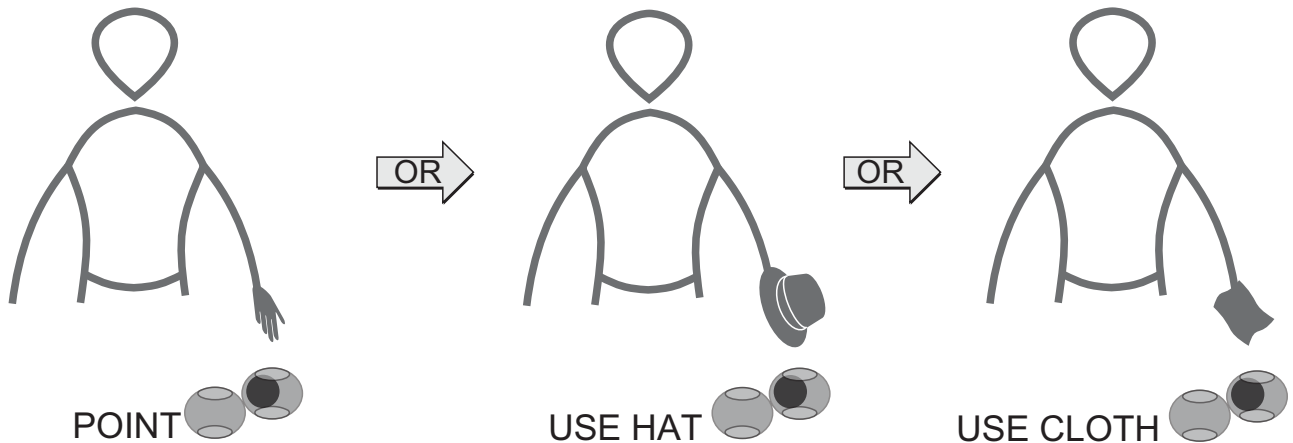
*jack behind bowl*

Align foot with jack & indicate draw

## Identifying Bowls

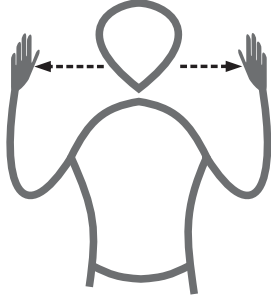


## Obscure jack - where is it

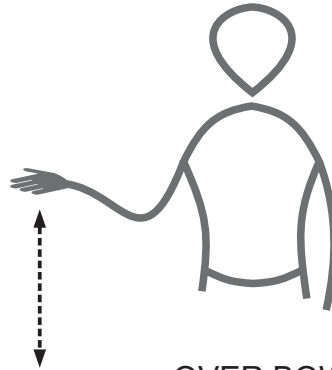




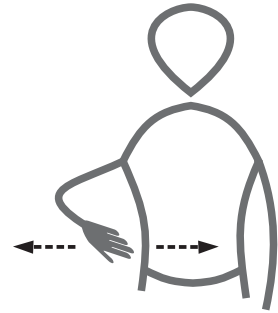
## Delivery result



SHORT BOWL

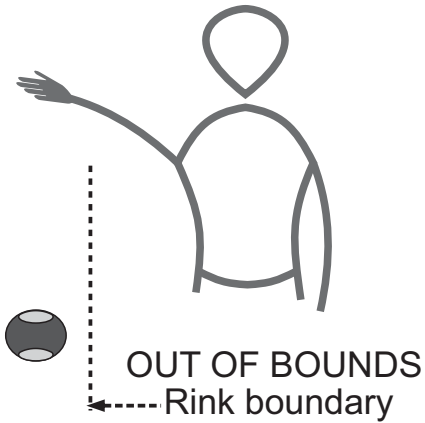


OVER BOWL

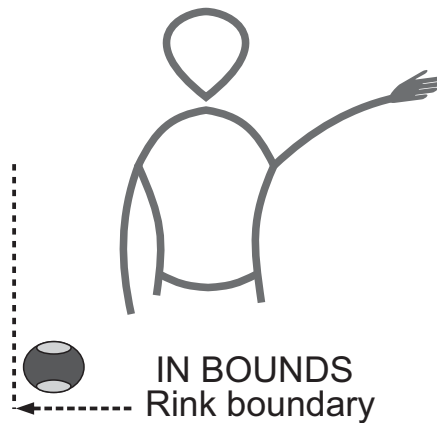


EVEN WITH JACK

## Bowl in or out

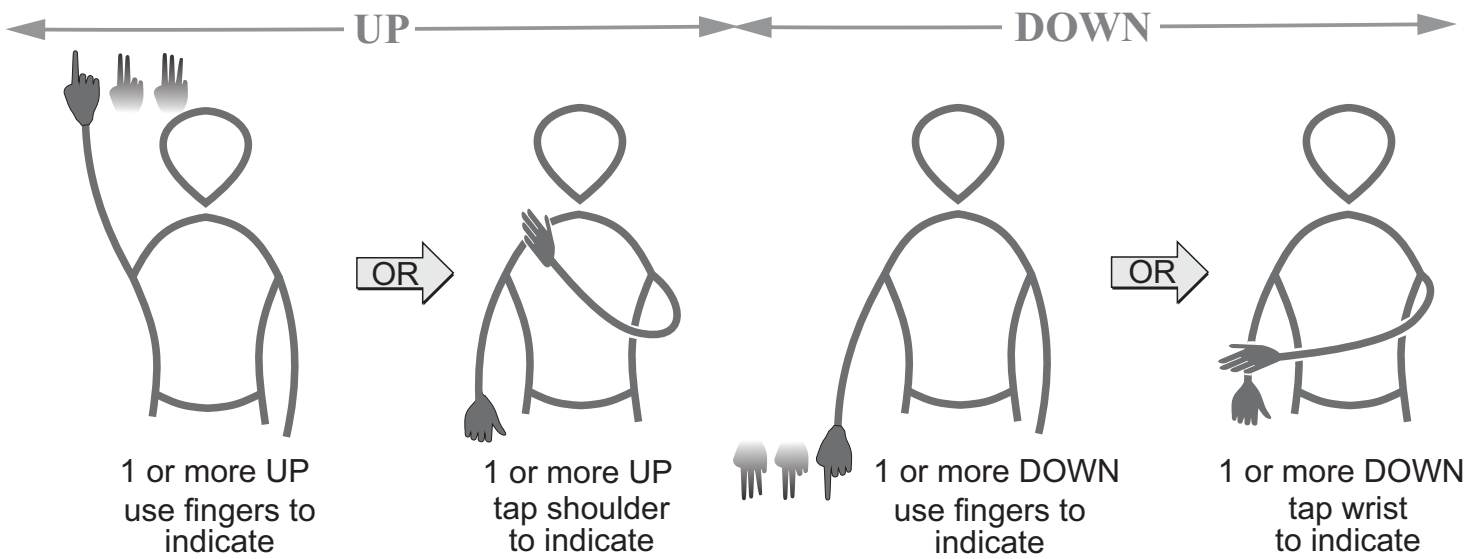


OUT OF BOUNDS  
Rink boundary

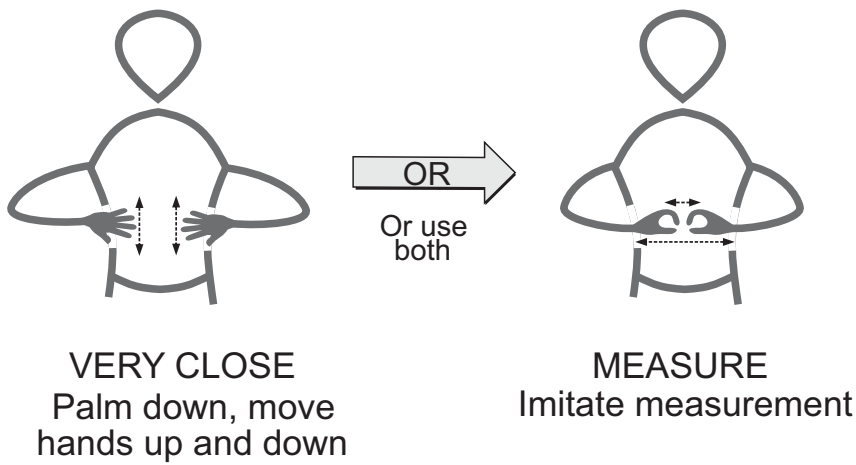


IN BOUNDS  
Rink boundary

**Who has shot**

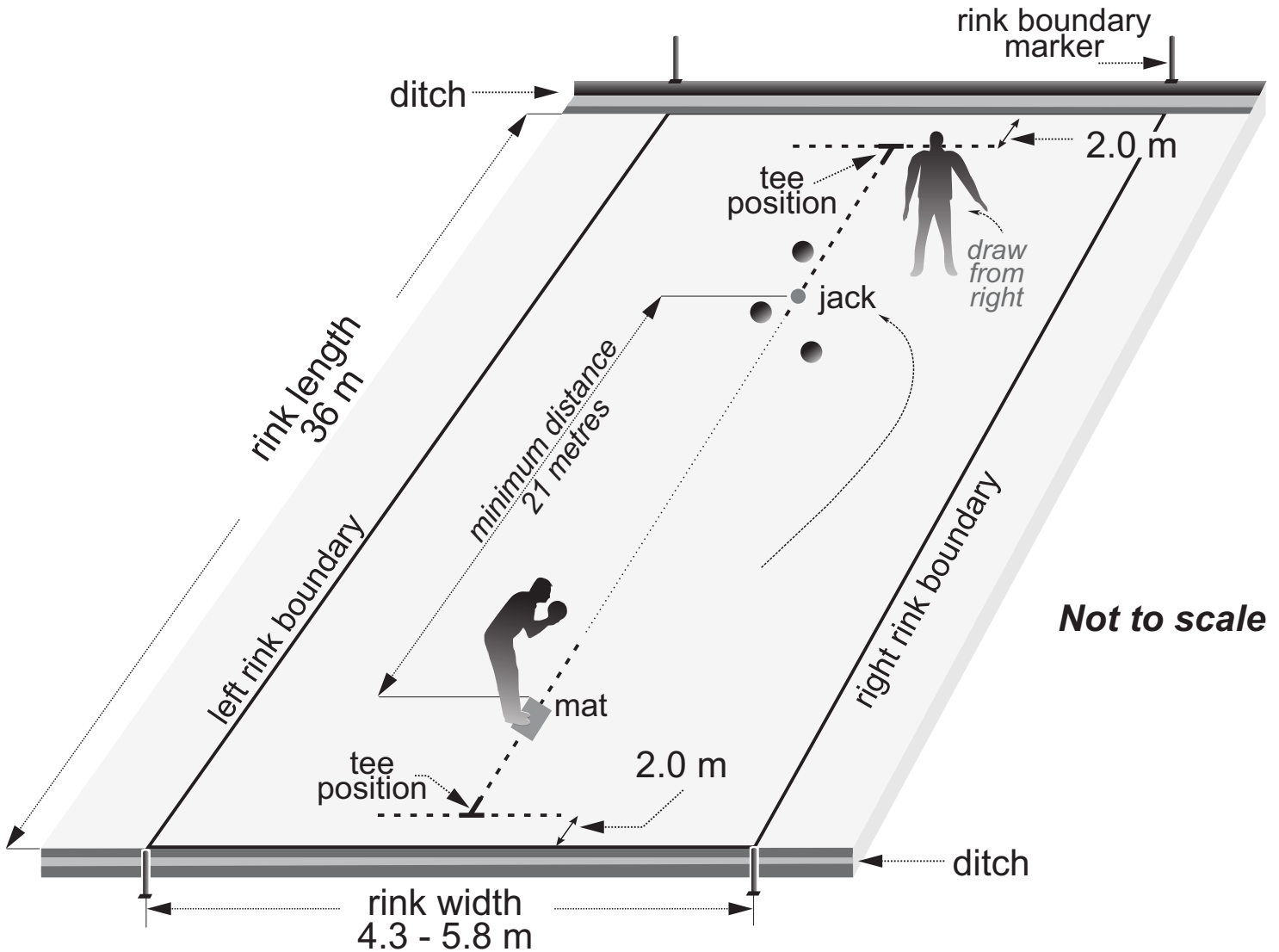


**Shot uncertain**



## Rink dimensions

The following illustration (not to scale) represents a bowling rink. It's purpose is to show the overall dimensions of a bowling rink and give a spacial context to how and when signals might be used.



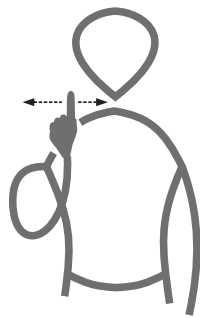
## Australian Sign Language (Auslan) signs

You can use some basic Auslan signs in combination with bowling hand signals to ask or respond to questions. The included illustrations are just a few examples of Auslan and there are variations/alternatives, particularly between regions, as to how certain words are signed.



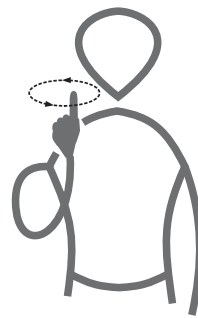
**BOWL**

Imitate bowling action



**WHAT**

Move index finger left and right



**WHO**

Trace small circle shape with index finger

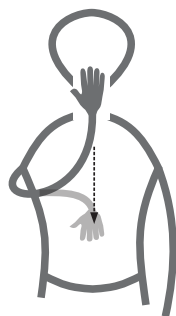


**WHERE**

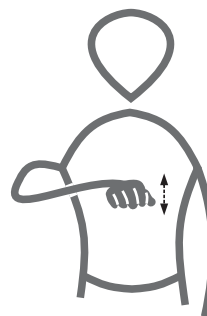
Hands in front, palms up, make small circles



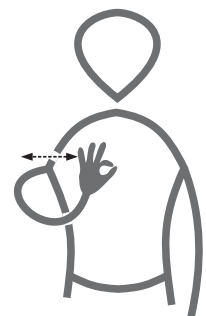
**OK, GOOD, ACKNOWLEDGEMENT**  
 Thumbs up



**THANK YOU**  
 Hand to lips, move down to about waist



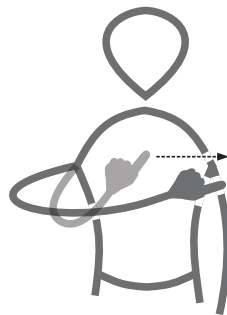
**YES**  
 Fist shape, up and down at wrist



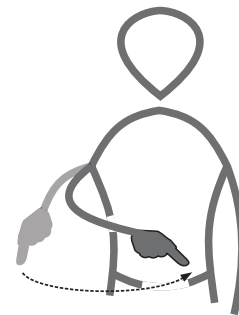
**NO**  
 Circle shape, and hand moves left/right



**ME**  
 Point inwards to yourself



**US our TEAM**  
 Point inwards, make arc to include others



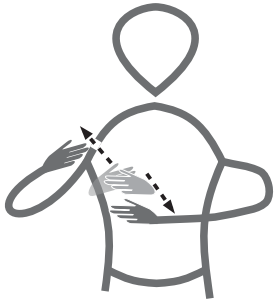
**THEM our OPONENTS**  
 Point outward, make arc to include others

**NOTE**

When using Auslan its OK to point and, movement of the head, eyes, body and facial expressions all help to add meaning.

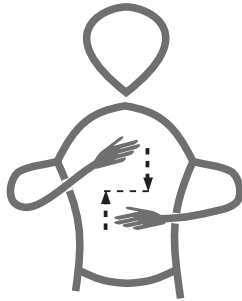


**Australian Sign Language (Auslan) signs ... continued**



**MORE**

Start - hands touching,  
 then spread hands apart

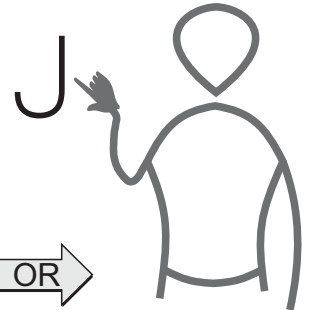


**LESS**

Start - hands apart,  
 then bring hands together



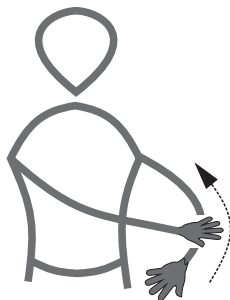
**J for JACK**  
 finger spell



**TRACE**  
**LETTER J**

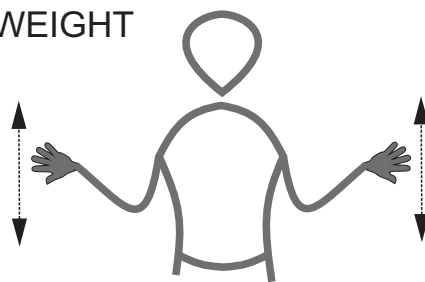
Trace J shape down  
 middle finger, then  
 towards thumb

**GRASS**



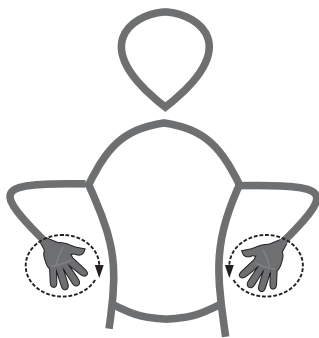
Move hand, palm down,  
 along other arm

**WEIGHT**

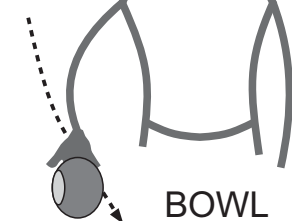


Move hand, palm up, up and down -  
 imitated lifting action

**Combining signals and signs ... a few simple examples**

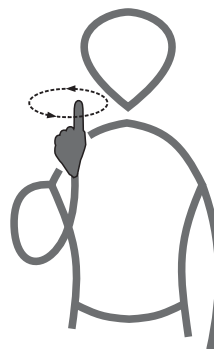


**WHERE**



**BOWL**

Where should (direction) I bowl?



**WHO**



**UP then DOWN**

Who has the shot?

**Note:**

The Auslan signs shown in this document do not have any endorsement from the Deafness Forum of Australia. They are simply an attempt to display some common signs that could be used while bowling. See the Auslan Signbankweb website for more details:

<https://www.auslan.org.au/>